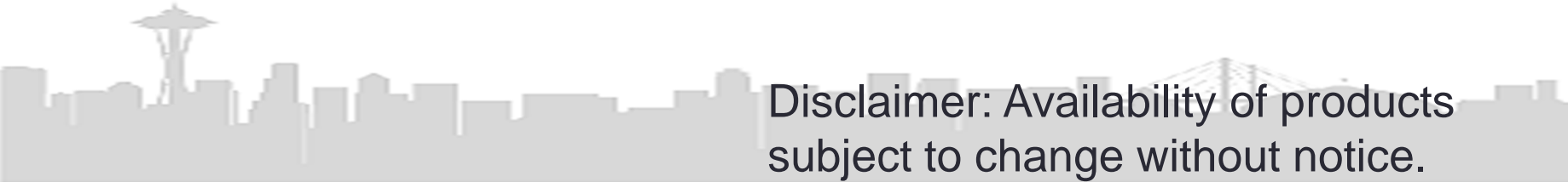


STOREHOUSE

~~Building Material Selection~~



Disclaimer: Availability of products
subject to change without notice.

WV STOREHOUSE BUILDING SUPPLY OVERVIEW

- *Most products are limited in quantity and are subject to change in availability without notice.
- *Handling fees go towards operational costs and are also subject to change.
- *We are always receiving new items, so stop by often!
- *Building Material Center hours are:
Monday-Thursday from 9:00am-4:00pm.

LIGHTING



❖ Various Styles



**Handling Fee:
\$5.00-\$24.00**

DOOR KNOBS



❖ Assorted styles

Handling Fee:
\$5.00



DOORS AND WINDOWS



- ❖ Wardrobe
- ❖ Pre-Hung
- ❖ Slab
- ❖ Bi-Fold

- Various Styles/Sizes

Handling Fee:
\$5.50-\$24.00



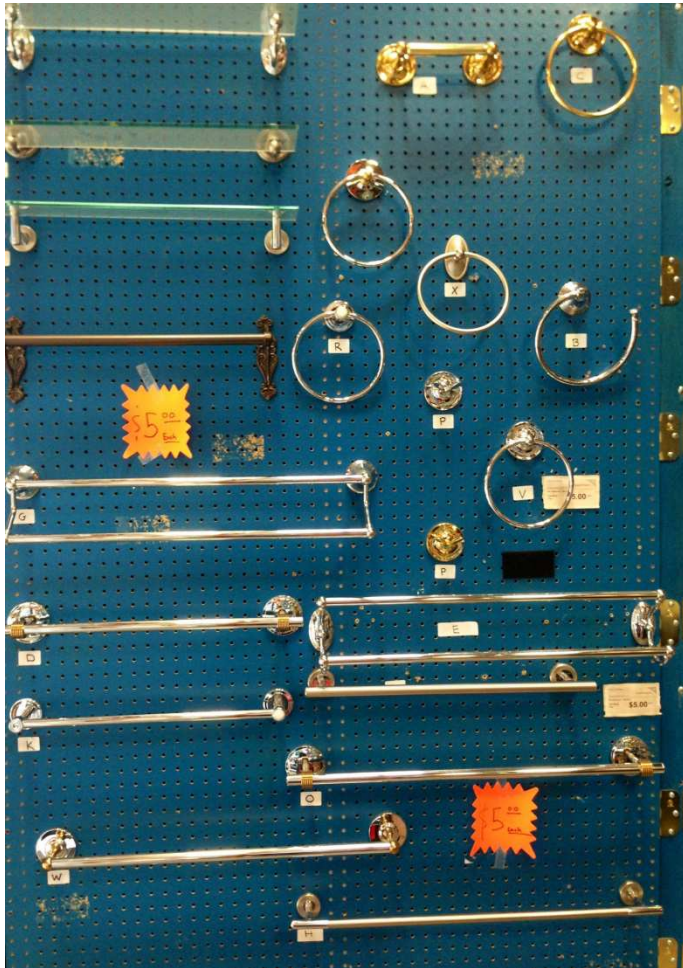
BLINDS

❖ Assorted Styles & Sizes

Handling Fee:
\$14.50-\$24.00



BATHROOM



- ❖ Towel Racks
- ❖ Towel Bars/Rings

Handling Fee:
\$24.00

BATHROOM FAUCETS



- ❖ Bathroom Faucets
- ❖ Various Styles & Colors

**Handling Fee:
\$12.00-\$17.75**

BATHROOM SINK

- ❖ Kohler Porcelain Oval sink
20" X 17"



- ❖ Kohler Wall mount sink
19-11/16" X 12-7/16"



Handling Fee:
\$29.75

BATHROOM SINK

Handling Fee:
\$29.75

❖ Kohler Bathroom Sink
22 1/2" X 18"



❖ Kohler Sink with Single Faucet Hole
24" X 19"



BATHROOM SINK

Handling Fee:
\$29.75

- ❖ Kohler Wall mounted oval basin
19 3/4" X 15 -1/8"



- ❖ Kohler round basin



BATHROOM SINK

Handling Fee:
\$29.75

❖ Kohler Sink
5-3/4" X 18-5/8" x 16-13/16"



❖ Kohler Classic-Oval basin
24" X 18-1/8"



BATHROOM SINK

Handling Fee:
\$29.75

❖ Kohler Vanity Top
49" X 22"



Kallista Pedestal Sink



TOILET SEAT



❖ Toilet Seats

- Various Colors & Styles

**Handling Fee:
\$5.00**

TOILETS

❖ Assorted Sizes & Styles



**Handling Fee:
\$59.50**

TUBS



- ❖ **Kohler – Whirlpool Tubs**
- ❖ **Jason International Tubs**
- ❖ **Various sizes and styles**

**Handling Fee:
\$238.00**

Kitchen Range Hoods



- ❖ Under the Counter Range Hood
- ❖ Color: Black

Handling Fee:
\$24.00

** Picture shown differs from what we actually stock

KITCHEN SINKS

Handling Fee:
\$29.75

**Kohler utility sink
19" X 19" X 10-1/4"**



**Kohler double sink
33" X 22"**



KITCHEN SINKS

Handling Fee:
\$29.75

**Kohler
Double Stainless Sink**



**Kohler Large Sink
w/ Disposal & Prep Sink**



KITCHEN SINKS

Kohler full countertop sink with drain board
H- 10-1/4" L - 60" W - 25-3/4"



Handling Fee:
\$29.75

Stainless Steel Kitchen Sink



KITCHEN FAUCETS



- ❖ Kitchen Faucets
- ❖ Various Styles & Colors

Handling Fee:
\$12.00-\$17.75

INSULATION



- ❖ R-20 Insulation
- ❖ R-30 Insulation
- ❖ Blow-in Insulation

**Handling Fee:
\$59.50/pallet**



Electric Water Heater



- Rheem Ruud Electric Water Heater
 - 50 Gallons
 - 208 Volts AC only

**Handling Fee:
\$238.00**

Goodman Electric Furnace



- 36,000 BTUs
- Out of Box
- Heat Strip not included
- 3 Ton Electric Furnace (Unpainted)
- 208/230 Volt
- Front Return
- 36”H x 24”D x 21”W
- Uses (16”x20”x1” Filter)

Handling Fee:
\$238.00

WINDOW AC UNIT



❖ **Fedders Window A/C**

**Handling Fee:
\$79.50**

DEHUMIDIFIER



❖ **Fedders Dehumidifier**

**Handling Fee:
\$24.00**

Field Trimmer



- **Southland Field Trimmer**
- 160cc
- 22" Cutting Width
- 5 HP

**Handling Fee:
\$119.00**

Mop Buckets



- ❖ **Mop Bucket**
- ❖ **With wringer**
- ❖ **Rubbermaid**
- ❖ **16 qt**

**Handling Fee:
\$59.50**

INSULATION TUBES



❖ **Various Sizes**

**Handling Fee:
\$.50/each**

House Wrap



- HardieWrap
- 3' x 100' per roll
- 11 mil sheets
- Premium non woven water resistant barrier

**Handling Fee:
\$12.00/ roll**



Fans



- Various large, industrial-sized fans.

**Handling Fee:
\$29.95**

Hoists and Cable



- Various Sizes and Styles



Ladders

- Various Heights and Styles

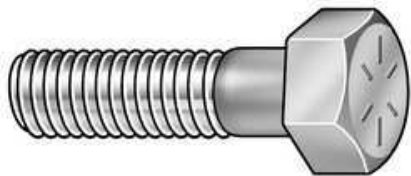
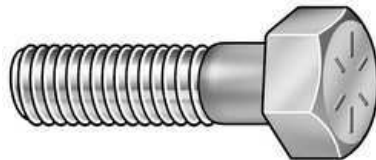
**Handling Fee:
\$24.00 and up**



SCREWS



❖ **Various Styles & Sizes**



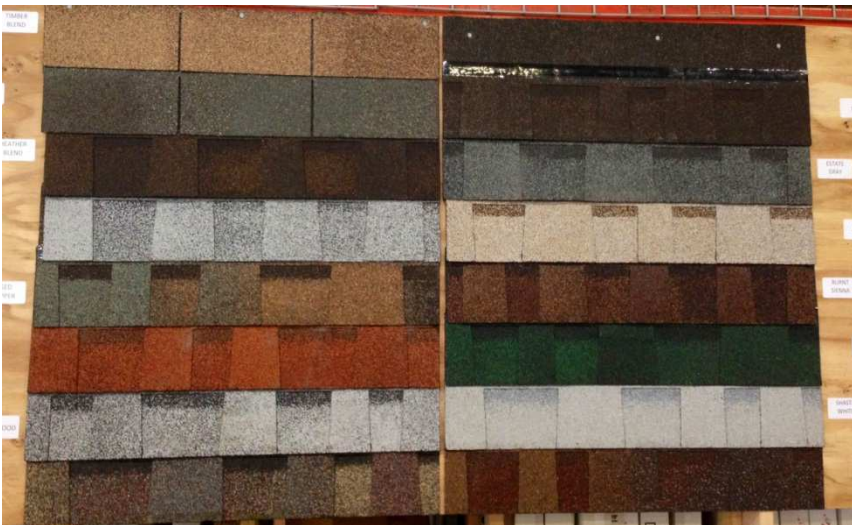
**Handling Fee:
\$1.00 a box**

ROOFING

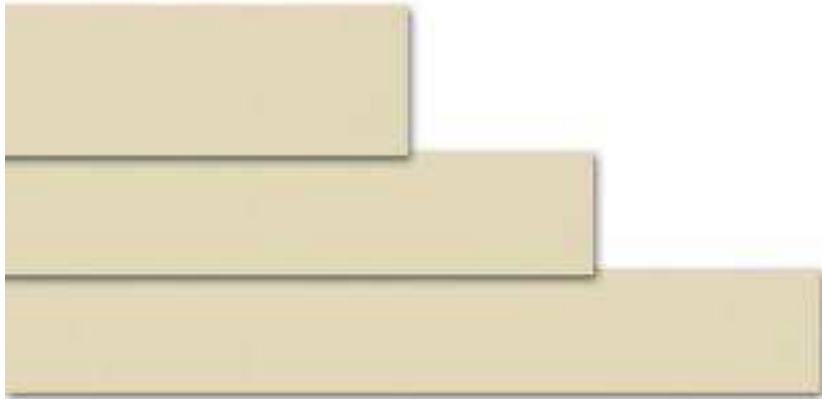


❖ **Various Styles & Sizes**

**Handling Fee:
\$25.00/square**



HARDI PLANK SIDING



- ❖ 8.25' X 12' Planks
- ❖ 7.25' X 12' Planks
- ❖ 4' X 8' Sheets

Handling Fee:
\$5.00/sheet
\$1.00/plank

NAILS



❖ 2-1/2 inch Box Nail



❖ Deck Nail (various sizes)



❖ Finishing Nail

❖ Sinker Nail



Handling Fees:

1lb box- \$1.00

5lb box- \$5.00

30lb box- \$12.00

MIRRORS



- ❖ Framed Mirror: 40-1/2" x 28-1/2"
- ❖ Framed Mirror: 39-1/2" x 23-1/2"

**Handling Fee:
\$24.00**

HAND TOOLS



❖ MISCELLANEOUS STYLES
AVAILABLE

Handling Fees:
\$1.00 & Up

Safety Equipment



- Eyewash Station



**Handling Fee:
\$79.50**

- Eye and Ear Protection
- Plus many other safety-focused items!



**Handling Fee:
\$1.00**

STORAGE BINS



- ❖ Akro Bins Storage Bins
- ❖ Various Colors & Sizes

**Handling Fee:
\$1.00/each**

CEILING FANS



❖ **VARIOUS STYLES & SIZES**

❖ **LIMITED QUANTITIES**



**Handling Fee:
\$5.00**

LIGHT BULBS



❖ **Various Styles & Sizes**

**Handling Fees:
\$.50/each**

Adhesives

**Kwik Seal-
Tub & Adhesive Caulk**



**Handling Fee:
\$.50**

**Henry Dual Purpose Carpet
Adhesive- 4 Gallon Bucket**



**Handling Fee:
\$13.25**

Gloves



❖ Various Styles & Sizes.



Handling Fee:
\$5.00/pack of 12

WORK WEAR



- ❖ Work Boots
 - ❖ Rain Boots
 - ❖ Rain Gear & Jackets
 - ❖ Safety Wear
- ***Various Styles & Styles***

**Handling Fee:
\$24.00**

TAPE



- ❖ Packing Tape
- ❖ Masking Tape

Handling Fee:
\$.50/each

Hydraulic Lift Jacks



- 3 Ton Professional Hydraulic Service Jack

**Handling Fee:
\$119.00**

CARTS



❖ Various Cart Styles



**Handling Fee:
\$59.50 & lower**



Tool Boxes



**Handling Fee:
\$59.50**



JOBBOX



- ❖ **Jobox StorAll**
- ❖ **Various sizes and styles.**
- ❖ **Perfect for trucks!**

**Handling Fee:
\$119.00**

WASTE CANS

Handling Fee:
\$12.00 and up

Tough Guy (31 gal)



Waste Can



World Vision Storehouse- Fife, WA

4200 Industry Dr E, Ste D

Fife, WA 98424

253.922.6240 ext 2239

Contact Kevin Baza

kbaza@worldvision.org

